

MARKET HISTORY

Includes data through 12/2011

Mercer County, NJ Single-Family



Market History Report

The Market History Report details current and historical statistical information for single-family listings recorded within TREND. This statistical report is organized by county and contains valuable month-over-month, year-over-year statistical information for each of the last 10 years. The Market History Report details activity in a particular market over a 10-year period – from where it's been to where it's at now. The easy-to-read month-over-month, year-over-year chart and graph enables you to clearly identify the year-over-year changes while accounting for seasonal and market trends.

Utilizing the report allows you to gain a better understanding of your market. This will give you new insights and increase your company's value when working with consumers. This powerful report is provided exclusively to TREND members.

Contents

Total Inventory	3
Inventory Accumulation	4
Pending Units	5
Settled Units	6
Total Settled Volume	7
Median Settled Price.....	8
Average Settled Price	9
Average Settled Price / Original Price.....	10

Definitions

Total Inventory The number of active single-family listings on the market on the last day of the specified month.

Inventory Accumulation The number of months it would take to exhaust the current supply of single-family listings at the current absorption rate.

Absorption Rate The average number of single-family listings sold in the market per month over the previous 12 months.

Pending Units The number of single-family listings with Pending dates during the specified month.

Settled Units The number of single-family listings with Settled dates during the specified month.

Total Settled Volume The total dollar volume of single-family listings that have settled during the specified month.

Median Settled Price The median price that single-family listings settled for during the specified month. Determined by arranging all Settled Listings in numerical order by price and then selecting the middle value.

Average Settled Price The average price that single-family listings settled for during the specified month. Determined by dividing the Total Settled Volume by the number of Settled Listings.

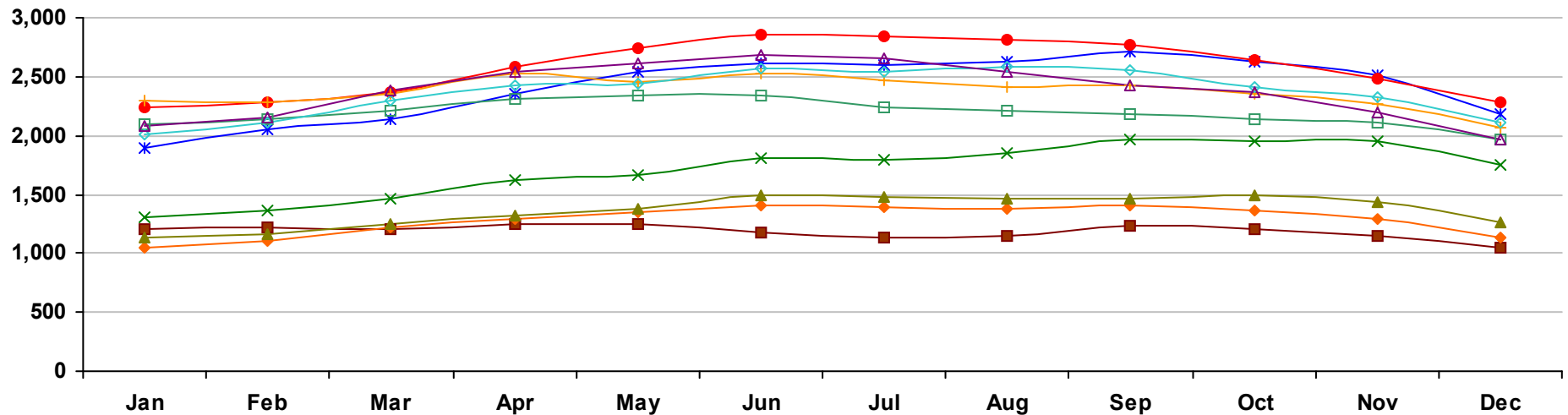
Average Settled Price / Original Price The average percentage of the Original Price that single-family listings settled for during the specified month. This number is determined by dividing the Settled Price by the Original Price for every listing, summing them and then dividing by the number of settled listings. TREND excludes listings if the Settled Price is greater than 150 percent or less than 50 percent of the Original Price. This ensures the percentage is more representative of listings in the market area.

Percent Change The change in value as compared to the same month of the previous year. Indicated by +/-0.0%.

Notes on Statistics

- All statistics are from TREND's monthly Residential Activity Reports. Due to the fluid nature of MLS data, insignificant statistical variations may occur with regard to sales activity between the various TREND reports.
- Mobile homes and condominiums are excluded from these statistics.
- This report includes information on listings and transactions facilitated through TREND and does not reflect the total number of listings and transactions of a given market area.
- All monetary statistics are rounded to the nearest \$10.

Mercer County, NJ - Single-Family - Total Inventory

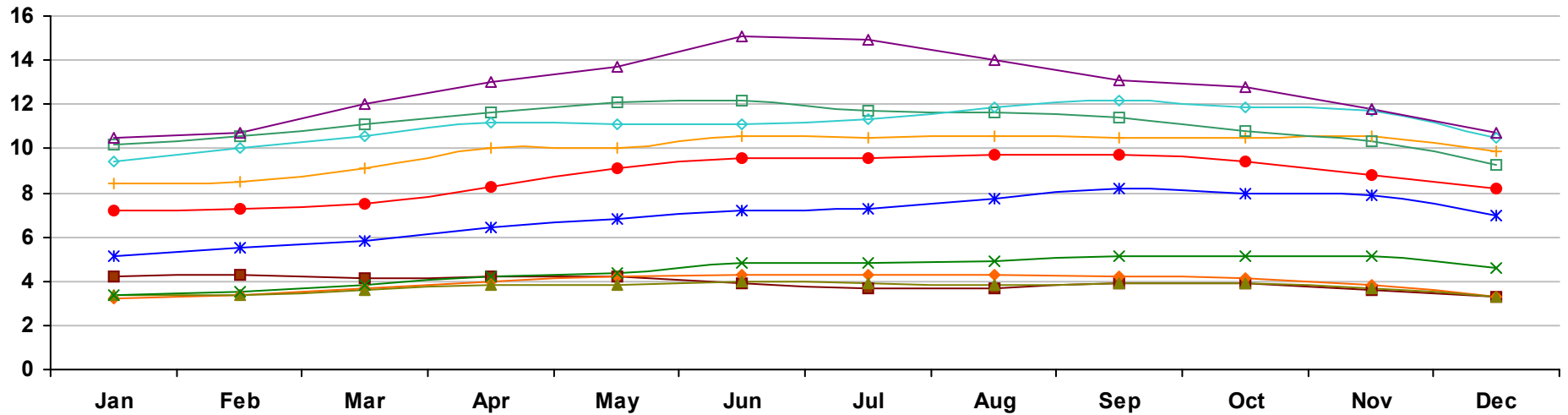


	Jan	Feb	Mar	Apr	May	Jun	Jul	Aug	Sep	Oct	Nov	Dec
2002	1,209 -7.9%	1,218 -7.3%	1,207 -12.9%	1,250 -15.0%	1,255 -12.8%	1,170 -20.2%	1,139 -21.8%	1,150 -19.4%	1,230 -8.3%	1,211 -12.1%	1,151 -11.9%	1,053 -8.8%
2003	1,051 -13.1%	1,106 -9.2%	1,213 0.5%	1,298 3.8%	1,354 7.9%	1,400 19.7%	1,388 21.9%	1,381 20.1%	1,400 13.8%	1,369 13.0%	1,288 11.9%	1,132 7.5%
2004	1,140 8.5%	1,167 5.5%	1,248 2.9%	1,326 2.2%	1,379 1.8%	1,500 7.1%	1,474 6.2%	1,458 5.6%	1,467 4.8%	1,486 8.5%	1,429 10.9%	1,263 11.6%
2005	1,306 14.6%	1,362 16.7%	1,468 17.6%	1,626 22.6%	1,670 21.1%	1,814 20.9%	1,788 21.3%	1,858 27.4%	1,961 33.7%	1,946 31.0%	1,954 36.7%	1,757 39.1%
2006	1,892 44.9%	2,047 50.3%	2,142 45.9%	2,359 45.1%	2,537 51.9%	2,615 44.2%	2,600 45.4%	2,632 41.7%	2,712 38.3%	2,629 35.1%	2,518 28.9%	2,184 24.3%
2007	2,244 18.6%	2,280 11.4%	2,368 10.6%	2,577 9.2%	2,747 8.3%	2,855 9.2%	2,848 9.5%	2,810 6.8%	2,766 2.0%	2,634 0.2%	2,484 -1.4%	2,284 4.6%
2008	2,299 2.5%	2,283 0.1%	2,352 -0.7%	2,526 -2.0%	2,459 -10.5%	2,529 -11.4%	2,471 -13.2%	2,412 -14.2%	2,427 -12.3%	2,359 -10.4%	2,274 -8.5%	2,065 -9.6%
2009	2,091 -9.0%	2,139 -6.3%	2,206 -6.2%	2,311 -8.5%	2,338 -4.9%	2,334 -7.7%	2,237 -9.5%	2,209 -8.4%	2,185 -10.0%	2,136 -9.5%	2,115 -7.0%	1,960 -5.1%
2010	2,005 -4.1%	2,116 -1.1%	2,302 4.4%	2,420 4.7%	2,445 4.6%	2,572 10.2%	2,542 13.6%	2,588 17.2%	2,557 17.0%	2,416 13.1%	2,329 10.1%	2,103 7.3%
2011	2,088 4.1%	2,146 1.4%	2,388 3.7%	2,547 5.2%	2,616 7.0%	2,686 4.4%	2,653 4.4%	2,536 -2.0%	2,426 -5.1%	2,362 -2.2%	2,190 -6.0%	1,967 -6.5%

Market History Report © Copyright 2011 TREND. Compiled on 1/10/2012. Information deemed reliable, but not guaranteed. Contact TREND for reprint permission.

TREND • 660 American Avenue, Suite 203 • King of Prussia, PA 19406 • 1-877-330-9900 • www.trendmls.com

Mercer County, NJ - Single-Family - Inventory Accumulation

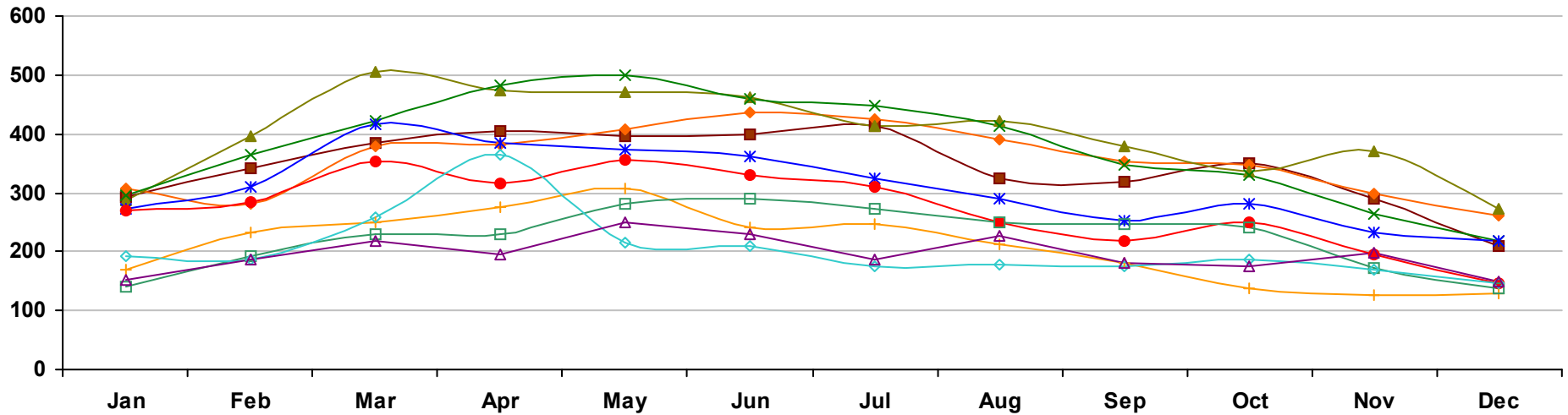


	Jan	Feb	Mar	Apr	May	Jun	Jul	Aug	Sep	Oct	Nov	Dec
■ 2002	4.2 -4.5%	4.3 -2.3%	4.1 -12.8%	4.2 -16.0%	4.2 -16.0%	3.9 -23.5%	3.7 -26.0%	3.7 -24.5%	3.9 -17.0%	3.9 -18.8%	3.6 -21.7%	3.3 -19.5%
◆ 2003	3.2 -23.8%	3.4 -20.9%	3.7 -9.8%	4.0 -4.8%	4.2 0.0%	4.3 10.3%	4.3 16.2%	4.3 16.2%	4.2 7.7%	4.1 5.1%	3.8 5.6%	3.3 0.0%
▲ 2004	3.4 6.2%	3.4 0.0%	3.6 -2.7%	3.8 -5.0%	3.8 -9.5%	4.0 -7.0%	3.9 -9.3%	3.8 -11.6%	3.9 -7.1%	3.9 -4.9%	3.7 -2.6%	3.3 0.0%
✕ 2005	3.4 0.0%	3.5 2.9%	3.8 5.6%	4.2 10.5%	4.4 15.8%	4.8 20.0%	4.8 23.1%	4.9 28.9%	5.1 30.8%	5.1 30.8%	5.1 37.8%	4.6 39.4%
✱ 2006	5.1 50.0%	5.5 57.1%	5.8 52.6%	6.4 52.4%	6.8 54.5%	7.2 50.0%	7.3 52.1%	7.7 57.1%	8.2 60.8%	8.0 56.9%	7.9 54.9%	7.0 52.2%
● 2007	7.2 41.2%	7.3 32.7%	7.5 29.3%	8.3 29.7%	9.1 33.8%	9.6 33.3%	9.6 31.5%	9.7 26.0%	9.7 18.3%	9.4 17.5%	8.8 11.4%	8.2 17.1%
+ 2008	8.4 16.7%	8.5 16.4%	9.1 21.3%	10.0 20.5%	10.0 9.9%	10.6 10.4%	10.5 9.4%	10.6 9.3%	10.5 8.2%	10.5 11.7%	10.6 20.5%	9.9 20.7%
□ 2009	10.2 21.4%	10.6 24.7%	11.1 22.0%	11.6 16.0%	12.1 21.0%	12.2 15.1%	11.7 11.4%	11.6 9.4%	11.4 8.6%	10.8 2.9%	10.3 -2.8%	9.3 -6.1%
◇ 2010	9.4 -7.8%	10.0 -5.7%	10.6 -4.5%	11.2 -3.4%	11.1 -8.3%	11.1 -9.0%	11.3 -3.4%	11.9 2.6%	12.2 7.0%	11.9 10.2%	11.7 13.6%	10.5 12.9%
△ 2011	10.5 11.7%	10.7 7.0%	12.0 13.2%	13.0 16.1%	13.7 23.4%	15.1 36.0%	14.9 31.9%	14.0 17.6%	13.1 7.4%	12.8 7.6%	11.8 0.9%	10.7 1.9%

Market History Report © Copyright 2011 TREND. Compiled on 1/10/2012. Information deemed reliable, but not guaranteed. Contact TREND for reprint permission.

TREND • 660 American Avenue, Suite 203 • King of Prussia, PA 19406 • 1-877-330-9900 • www.trendmls.com

Mercer County, NJ - Single-Family - Pending Units

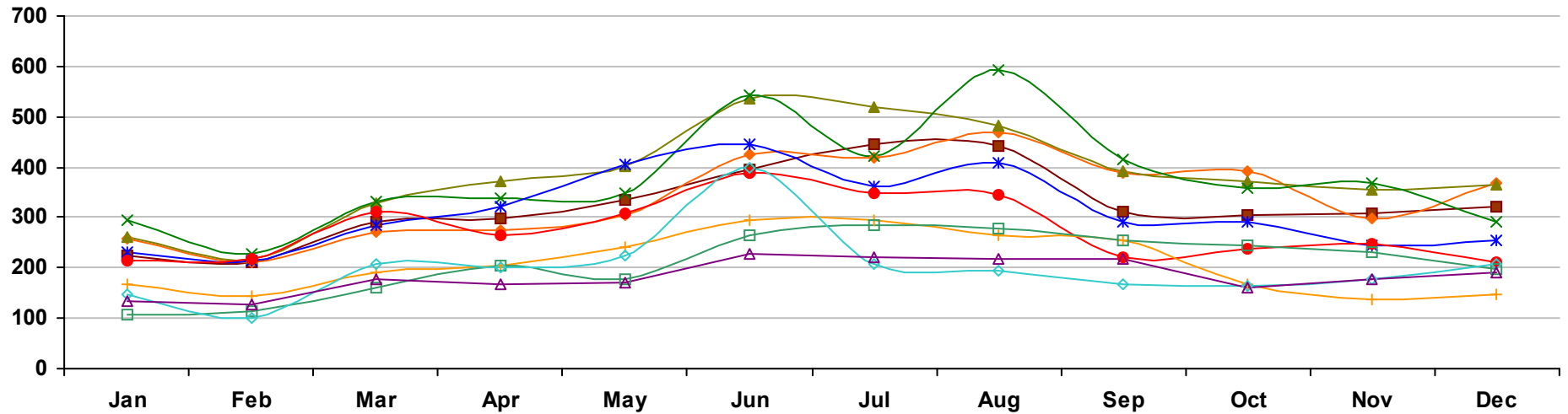


	Jan	Feb	Mar	Apr	May	Jun	Jul	Aug	Sep	Oct	Nov	Dec
2002	294 30.1%	341 21.4%	384 32.0%	406 21.2%	395 11.9%	399 35.3%	413 32.8%	324 14.9%	318 41.3%	350 33.6%	289 0.0%	210 -7.5%
2003	307 4.4%	280 -17.9%	379 -1.3%	381 -6.2%	407 3.0%	437 9.5%	424 2.7%	390 20.4%	353 11.0%	346 -1.1%	299 3.5%	262 24.8%
2004	286 -6.8%	397 41.8%	505 33.2%	475 24.7%	470 15.5%	461 5.5%	412 -2.8%	422 8.2%	378 7.1%	335 -3.2%	371 24.1%	272 3.8%
2005	297 3.8%	366 -7.8%	421 -16.6%	481 1.3%	499 6.2%	459 -0.4%	447 8.5%	414 -1.9%	348 -7.9%	330 -1.5%	265 -28.6%	219 -19.5%
2006	272 -8.4%	310 -15.3%	416 -1.2%	385 -20.0%	373 -25.3%	361 -21.4%	325 -27.3%	290 -30.0%	254 -27.0%	282 -14.5%	233 -12.1%	218 -0.5%
2007	271 -0.4%	284 -8.4%	352 -15.4%	315 -18.2%	355 -4.8%	329 -8.9%	310 -4.6%	249 -14.1%	219 -13.8%	251 -11.0%	194 -16.7%	147 -32.6%
2008	168 -38.0%	233 -18.0%	251 -28.7%	275 -12.7%	308 -13.2%	242 -26.4%	247 -20.3%	213 -14.5%	180 -17.8%	137 -45.4%	127 -34.5%	128 -12.9%
2009	141 -16.1%	193 -17.2%	230 -8.4%	230 -16.4%	281 -8.8%	290 19.8%	272 10.1%	249 16.9%	248 37.8%	240 75.2%	173 36.2%	138 7.8%
2010	193 36.9%	188 -2.6%	259 12.6%	364 58.3%	216 -23.1%	211 -27.2%	174 -36.0%	177 -28.9%	175 -29.4%	188 -21.7%	168 -2.9%	145 5.1%
2011	151 -21.8%	187 -0.5%	219 -15.4%	196 -46.2%	249 15.3%	231 9.5%	186 6.9%	227 28.2%	182 4.0%	175 -6.9%	199 18.5%	150 3.4%

Market History Report © Copyright 2011 TREND. Compiled on 1/10/2012. Information deemed reliable, but not guaranteed. Contact TREND for reprint permission.

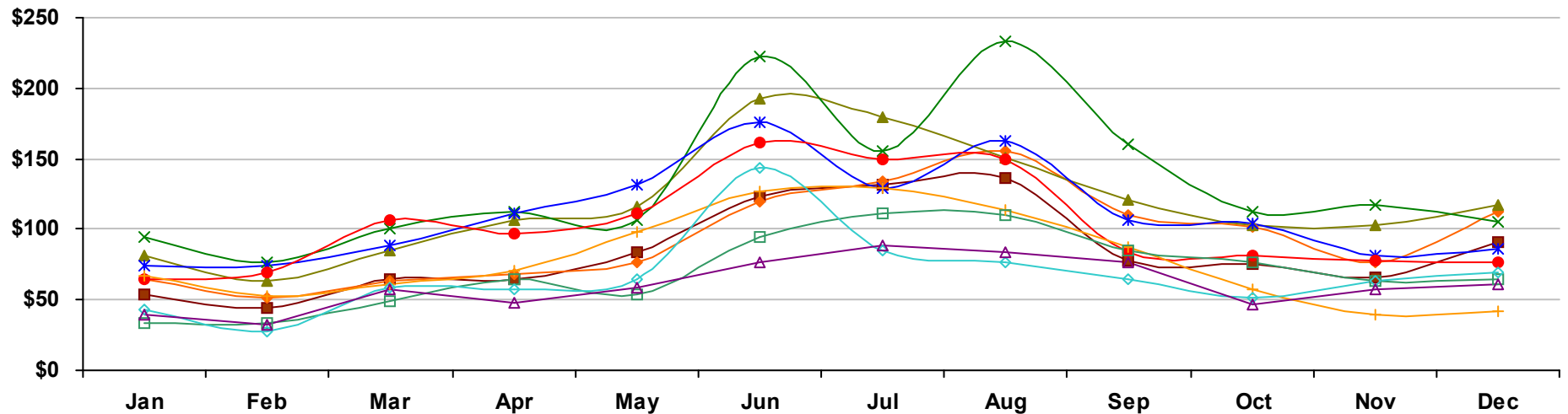
TREND • 660 American Avenue, Suite 203 • King of Prussia, PA 19406 • 1-877-330-9900 • www.trendmls.com

Mercer County, NJ - Single-Family - Settled Units



	Jan	Feb	Mar	Apr	May	Jun	Jul	Aug	Sep	Oct	Nov	Dec
2002	223 13.8%	210 2.4%	293 27.4%	297 36.9%	335 22.7%	394 0.5%	444 19.4%	441 15.1%	313 6.5%	306 2.3%	308 15.4%	323 28.7%
2003	259 16.1%	210 0.0%	271 -7.5%	276 -7.1%	304 -9.3%	425 7.9%	418 -5.9%	470 6.6%	389 24.3%	391 27.8%	297 -3.6%	368 13.9%
2004	262 1.2%	218 3.8%	327 20.7%	372 34.8%	401 31.9%	537 26.4%	520 24.4%	481 2.3%	391 0.5%	372 -4.9%	354 19.2%	365 -0.8%
2005	295 12.6%	229 5.0%	333 1.8%	339 -8.9%	347 -13.5%	544 1.3%	421 -19.0%	593 23.3%	415 6.1%	360 -3.2%	367 3.7%	293 -19.7%
2006	230 -22.0%	215 -6.1%	284 -14.7%	320 -5.6%	406 17.0%	445 -18.2%	361 -14.3%	407 -31.4%	290 -30.1%	291 -19.2%	246 -33.0%	254 -13.3%
2007	216 -6.1%	217 0.9%	311 9.5%	264 -17.5%	308 -24.1%	387 -13.0%	347 -3.9%	345 -15.2%	221 -23.8%	238 -18.2%	248 0.8%	210 -17.3%
2008	166 -23.1%	145 -33.2%	191 -38.6%	204 -22.7%	241 -21.8%	294 -24.0%	296 -14.7%	266 -22.9%	253 14.5%	167 -29.8%	136 -45.2%	148 -29.5%
2009	108 -34.9%	114 -21.4%	160 -16.2%	203 -0.5%	178 -26.1%	265 -9.9%	284 -4.1%	278 4.5%	255 0.8%	243 45.5%	232 70.6%	197 33.1%
2010	146 35.2%	102 -10.5%	208 30.0%	202 -0.5%	223 25.3%	399 50.6%	209 -26.4%	194 -30.2%	167 -34.5%	163 -32.9%	177 -23.7%	208 5.6%
2011	135 -7.5%	127 24.5%	179 -13.9%	168 -16.8%	170 -23.8%	228 -42.9%	222 6.2%	218 12.4%	219 31.1%	161 -1.2%	179 1.1%	191 -8.2%

Mercer County, NJ - Single-Family - Total Settled Volume



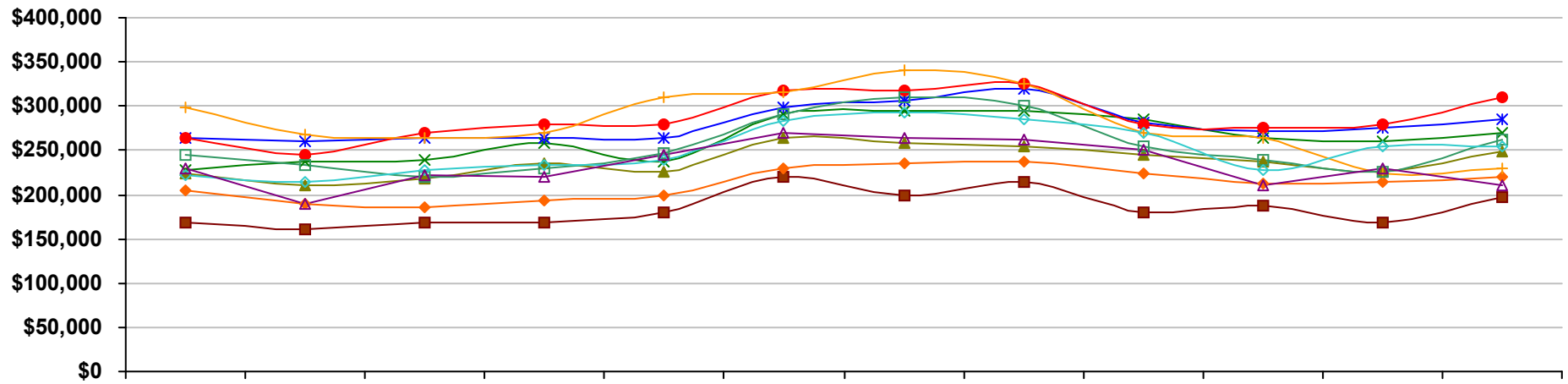
	Jan	Feb	Mar	Apr	May	Jun	Jul	Aug	Sep	Oct	Nov	Dec
2002	\$54 23.1%	\$44 15.5%	\$64 25.1%	\$64 37.1%	\$84 45.5%	\$123 36.1%	\$131 43.2%	\$136 28.3%	\$78 -2.5%	\$75 20.2%	\$66 12.3%	\$91 57.6%
2003	\$65 21.6%	\$51 16.0%	\$63 -1.3%	\$68 6.1%	\$77 -7.8%	\$120 -2.2%	\$134 2.5%	\$155 13.8%	\$110 42.2%	\$102 36.1%	\$76 15.1%	\$112 22.5%
2004	\$81 24.7%	\$63 22.8%	\$85 34.5%	\$107 56.8%	\$116 49.6%	\$193 60.6%	\$179 33.5%	\$151 -2.6%	\$121 10.1%	\$103 1.1%	\$103 35.1%	\$117 4.8%
2005	\$95 17.0%	\$77 21.8%	\$100 18.1%	\$112 4.9%	\$106 -8.5%	\$222 14.8%	\$155 -13.0%	\$233 54.5%	\$160 31.8%	\$113 9.8%	\$117 13.6%	\$105 -10.2%
2006	\$74 -22.6%	\$74 -3.4%	\$89 -10.8%	\$111 -0.9%	\$131 23.6%	\$176 -20.5%	\$129 -16.9%	\$163 -30.1%	\$106 -33.6%	\$104 -7.6%	\$81 -31.0%	\$86 -18.1%
2007	\$64 -13.4%	\$69 -7.0%	\$107 19.3%	\$97 -13.0%	\$111 -15.4%	\$161 -8.7%	\$150 15.8%	\$150 -7.7%	\$84 -21.4%	\$81 -22.3%	\$78 -3.0%	\$77 -10.1%
2008	\$67 4.8%	\$53 -23.9%	\$61 -42.7%	\$71 -27.1%	\$98 -11.4%	\$127 -21.4%	\$129 -13.9%	\$114 -24.0%	\$87 3.7%	\$57 -29.4%	\$39 -50.3%	\$42 -46.0%
2009	\$34 -48.5%	\$33 -37.9%	\$49 -19.8%	\$64 -9.1%	\$54 -44.8%	\$94 -25.9%	\$111 -14.0%	\$110 -3.8%	\$85 -1.8%	\$76 32.3%	\$63 60.4%	\$65 56.5%
2010	\$43 24.3%	\$27 -16.7%	\$59 19.5%	\$58 -9.0%	\$65 19.3%	\$144 53.9%	\$85 -23.3%	\$77 -29.7%	\$64 -24.5%	\$51 -33.3%	\$63 0.9%	\$69 6.0%
2011	\$39 -9.9%	\$32 18.2%	\$57 -2.5%	\$48 -18.0%	\$59 -9.5%	\$77 -46.9%	\$89 4.6%	\$84 8.6%	\$76 18.9%	\$47 -6.7%	\$58 -8.6%	\$61 -12.5%

Values on this report are displayed in Millions

Market History Report © Copyright 2011 TREND. Compiled on 1/10/2012. Information deemed reliable, but not guaranteed. Contact TREND for reprint permission.

TREND • 660 American Avenue, Suite 203 • King of Prussia, PA 19406 • 1-877-330-9900 • www.trendmls.com

Mercer County, NJ - Single-Family - Median Settled Price

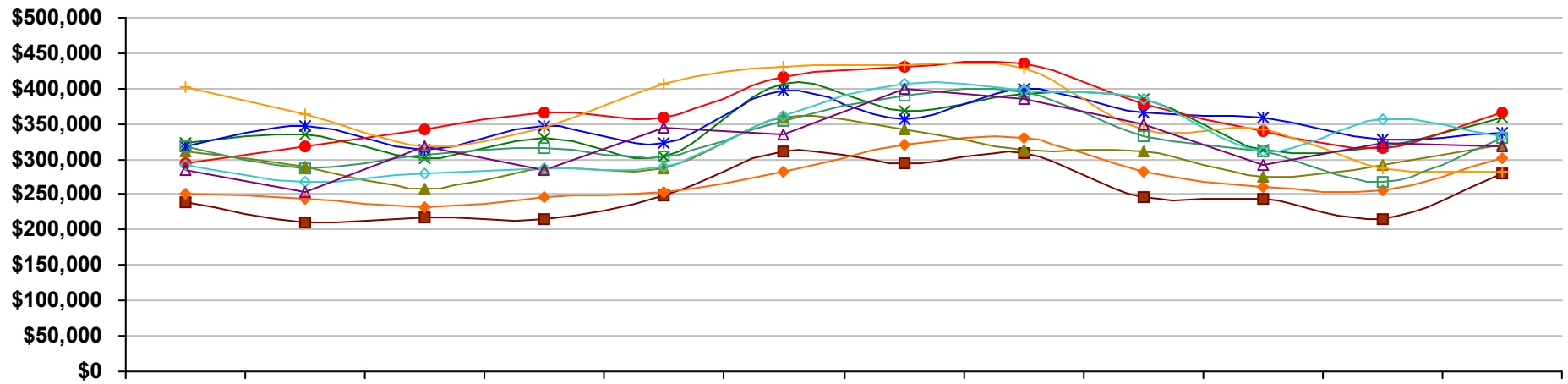


	Jan	Feb	Mar	Apr	May	Jun	Jul	Aug	Sep	Oct	Nov	Dec
■ 2002	\$169,000 18.2%	\$160,000 7.4%	\$169,000 10.5%	\$168,000 10.5%	\$180,000 19.2%	\$221,000 32.3%	\$200,000 17.6%	\$214,000 9.7%	\$179,000 -3.8%	\$187,000 12.7%	\$168,000 5.0%	\$198,000 26.9%
◆ 2003	\$205,000 21.3%	\$189,000 18.1%	\$185,000 9.5%	\$194,000 15.5%	\$200,000 11.1%	\$230,000 4.1%	\$235,000 17.5%	\$237,000 10.7%	\$224,000 25.1%	\$212,000 13.4%	\$215,000 28.0%	\$220,000 11.1%
▲ 2004	\$223,000 8.8%	\$210,000 11.1%	\$218,000 17.8%	\$235,000 21.1%	\$225,000 12.5%	\$265,000 15.2%	\$259,000 10.2%	\$254,000 7.2%	\$245,000 9.4%	\$237,000 11.8%	\$225,000 4.7%	\$249,000 13.2%
✕ 2005	\$228,000 2.2%	\$237,000 12.9%	\$240,000 10.1%	\$259,000 10.2%	\$237,000 5.3%	\$291,000 9.8%	\$295,000 13.9%	\$295,000 16.1%	\$285,000 16.3%	\$265,000 11.8%	\$260,000 15.6%	\$270,000 8.4%
✱ 2006	\$265,000 16.2%	\$260,000 9.7%	\$265,000 10.4%	\$265,000 2.3%	\$265,000 11.8%	\$299,000 2.7%	\$306,000 3.7%	\$320,000 8.5%	\$282,000 -1.1%	\$272,000 2.6%	\$275,000 5.8%	\$285,000 5.6%
● 2007	\$265,000 0.0%	\$245,000 -5.8%	\$270,000 1.9%	\$280,000 5.7%	\$280,000 5.7%	\$318,000 6.4%	\$317,000 3.6%	\$326,000 1.9%	\$280,000 -0.7%	\$275,000 1.1%	\$280,000 1.8%	\$310,000 8.8%
+ 2008	\$298,000 12.5%	\$268,000 9.4%	\$264,000 -2.2%	\$269,000 -3.9%	\$310,000 10.7%	\$315,000 -0.9%	\$340,000 7.3%	\$325,000 -0.3%	\$270,000 -3.6%	\$265,000 -3.6%	\$224,000 -20.0%	\$230,000 -25.8%
□ 2009	\$245,000 -17.8%	\$233,000 -13.1%	\$221,000 -16.3%	\$230,000 -14.5%	\$246,000 -20.6%	\$290,000 -7.9%	\$310,000 -8.8%	\$301,000 -7.4%	\$255,000 -5.6%	\$239,000 -9.8%	\$225,000 0.4%	\$263,000 14.3%
◇ 2010	\$222,000 -9.4%	\$215,000 -7.7%	\$228,000 3.2%	\$234,000 1.7%	\$240,000 -2.4%	\$284,000 -2.1%	\$292,000 -5.8%	\$285,000 -5.3%	\$270,000 5.9%	\$228,000 -4.6%	\$255,000 13.3%	\$254,000 -3.4%
△ 2011	\$230,000 3.6%	\$189,000 -12.1%	\$222,000 -2.6%	\$220,000 -6.0%	\$245,000 2.1%	\$270,000 -4.9%	\$265,000 -9.2%	\$262,000 -8.1%	\$250,000 -7.4%	\$210,000 -7.9%	\$230,000 -9.8%	\$210,000 -17.3%

Market History Report © Copyright 2011 TREND. Compiled on 1/10/2012. Information deemed reliable, but not guaranteed. Contact TREND for reprint permission.

TREND • 660 American Avenue, Suite 203 • King of Prussia, PA 19406 • 1-877-330-9900 • www.trendmls.com

Mercer County, NJ - Single-Family - Average Settled Price

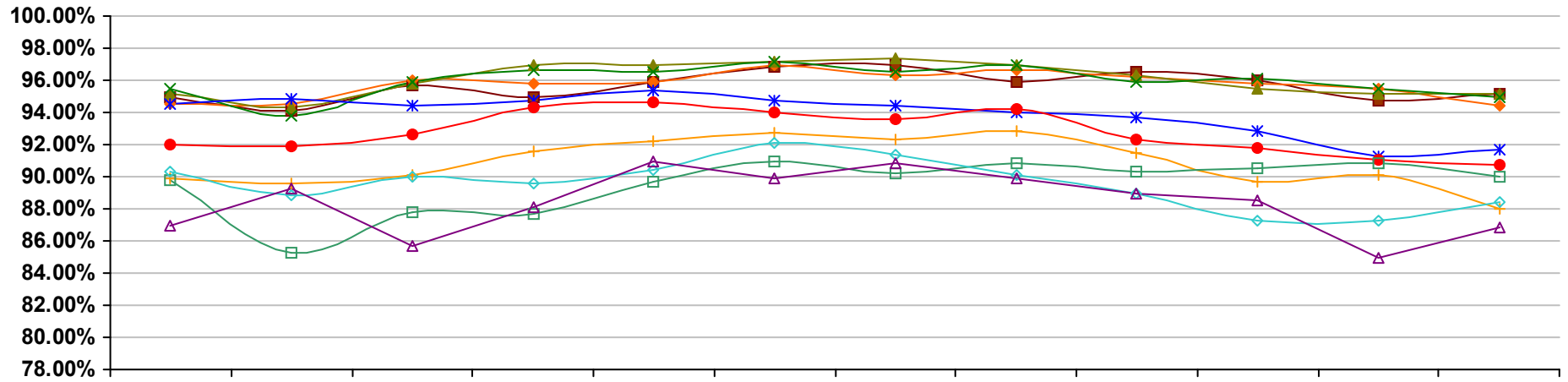


	Jan	Feb	Mar	Apr	May	Jun	Jul	Aug	Sep	Oct	Nov	Dec
■ 2002	\$240,000 8.6%	\$211,000 12.8%	\$218,000 -1.8%	\$216,000 0.5%	\$250,000 18.5%	\$312,000 35.7%	\$294,000 20.0%	\$308,000 11.6%	\$247,000 -8.5%	\$244,000 17.3%	\$215,000 -2.3%	\$281,000 22.2%
◆ 2003	\$251,000 4.6%	\$245,000 16.1%	\$233,000 6.9%	\$247,000 14.4%	\$254,000 1.6%	\$283,000 -9.3%	\$320,000 8.8%	\$329,000 6.8%	\$283,000 14.6%	\$260,000 6.6%	\$256,000 19.1%	\$302,000 7.5%
▲ 2004	\$310,000 23.5%	\$290,000 18.4%	\$259,000 11.2%	\$287,000 16.2%	\$288,000 13.4%	\$359,000 26.9%	\$343,000 7.2%	\$313,000 -4.9%	\$310,000 9.5%	\$276,000 6.2%	\$291,000 13.7%	\$320,000 6.0%
✕ 2005	\$322,000 3.9%	\$336,000 15.9%	\$301,000 16.2%	\$330,000 15.0%	\$305,000 5.9%	\$407,000 13.4%	\$369,000 7.6%	\$392,000 25.2%	\$385,000 24.2%	\$313,000 13.4%	\$319,000 9.6%	\$358,000 11.9%
✱ 2006	\$319,000 -0.9%	\$346,000 3.0%	\$314,000 4.3%	\$347,000 5.2%	\$322,000 5.6%	\$396,000 -2.7%	\$357,000 -3.3%	\$399,000 1.8%	\$366,000 -4.9%	\$358,000 14.4%	\$328,000 2.8%	\$338,000 -5.6%
● 2007	\$294,000 -7.8%	\$318,000 -8.1%	\$342,000 8.9%	\$366,000 5.5%	\$359,000 11.5%	\$416,000 5.1%	\$430,000 20.4%	\$435,000 9.0%	\$378,000 3.3%	\$340,000 -5.0%	\$316,000 -3.7%	\$367,000 8.6%
✚ 2008	\$401,000 36.4%	\$363,000 14.2%	\$319,000 -6.7%	\$345,000 -5.7%	\$407,000 13.4%	\$430,000 3.4%	\$434,000 0.9%	\$429,000 -1.4%	\$342,000 -9.5%	\$343,000 0.9%	\$286,000 -9.5%	\$282,000 -23.2%
◻ 2009	\$318,000 -18.7%	\$287,000 -20.9%	\$306,000 -4.1%	\$315,000 -8.7%	\$304,000 -25.3%	\$353,000 -17.9%	\$389,000 -10.4%	\$394,000 -8.2%	\$333,000 -2.6%	\$312,000 -9.0%	\$269,000 -5.9%	\$331,000 17.4%
◇ 2010	\$292,000 -8.2%	\$267,000 -7.0%	\$281,000 -8.2%	\$288,000 -8.6%	\$289,000 -4.9%	\$361,000 2.3%	\$406,000 4.4%	\$397,000 0.8%	\$384,000 15.3%	\$310,000 -0.6%	\$356,000 32.3%	\$333,000 0.6%
△ 2011	\$285,000 -2.4%	\$253,000 -5.2%	\$318,000 13.2%	\$284,000 -1.4%	\$344,000 19.0%	\$336,000 -6.9%	\$400,000 -1.5%	\$384,000 -3.3%	\$349,000 -9.1%	\$292,000 -5.8%	\$322,000 -9.6%	\$317,000 -4.8%

Market History Report © Copyright 2011 TREND. Compiled on 1/10/2012. Information deemed reliable, but not guaranteed. Contact TREND for reprint permission.

TREND • 660 American Avenue, Suite 203 • King of Prussia, PA 19406 • 1-877-330-9900 • www.trendmls.com

Mercer County, NJ - Single-Family - Average Settled Price/Original Price



	Jan	Feb	Mar	Apr	May	Jun	Jul	Aug	Sep	Oct	Nov	Dec
2002	94.9% -0.2%	94.1% 1.3%	95.7% 2.1%	95.0% 0.7%	95.9% 0.9%	96.8% 0.8%	96.9% 1.2%	95.9% -0.7%	96.5% -0.1%	96.0% 0.3%	94.7% -0.9%	95.2% 0.8%
2003	94.5% -0.4%	94.5% 0.4%	96.0% 0.4%	95.8% 0.9%	95.9% -0.1%	97.0% 0.2%	96.3% -0.6%	96.6% 0.7%	96.2% -0.2%	95.8% -0.2%	95.5% 0.8%	94.4% -0.8%
2004	95.2% 0.8%	94.3% -0.1%	95.8% -0.2%	96.9% 1.1%	97.0% 1.2%	97.2% 0.1%	97.4% 1.2%	97.0% 0.4%	96.3% 0.1%	95.5% -0.4%	95.2% -0.3%	95.2% 0.8%
2005	95.5% 0.3%	93.8% -0.6%	95.9% 0.1%	96.6% -0.3%	96.5% -0.5%	97.2% 0.0%	96.5% -0.9%	96.9% -0.1%	95.9% -0.4%	96.1% 0.7%	95.5% 0.3%	95.0% -0.3%
2006	94.5% -1.1%	94.8% 1.1%	94.4% -1.6%	94.7% -1.9%	95.4% -1.2%	94.7% -2.5%	94.4% -2.2%	94.0% -3.0%	93.7% -2.3%	92.8% -3.5%	91.3% -4.4%	91.7% -3.5%
2007	92.0% -2.6%	91.9% -3.1%	92.6% -1.9%	94.3% -0.5%	94.6% -0.8%	94.0% -0.8%	93.6% -0.9%	94.2% 0.2%	92.3% -1.5%	91.8% -1.1%	91.1% -0.3%	90.7% -1.1%
2008	89.9% -2.3%	89.6% -2.5%	90.1% -2.7%	91.6% -2.8%	92.2% -2.5%	92.7% -1.4%	92.3% -1.3%	92.8% -1.4%	91.5% -0.9%	89.7% -2.3%	90.1% -1.1%	88.0% -2.9%
2009	89.8% -0.2%	85.3% -4.8%	87.8% -2.6%	87.7% -4.3%	89.7% -2.7%	90.9% -1.9%	90.2% -2.3%	90.8% -2.2%	90.3% -1.3%	90.5% 0.9%	90.8% 0.9%	90.0% 2.3%
2010	90.3% 0.6%	88.8% 4.2%	90.0% 2.5%	89.6% 2.2%	90.4% 0.8%	92.1% 1.4%	91.4% 1.3%	90.1% -0.7%	89.0% -1.4%	87.3% -3.5%	87.3% -3.9%	88.4% -1.9%
2011	87.0% -3.6%	89.3% 0.5%	85.7% -4.8%	88.1% -1.7%	90.9% 0.5%	89.9% -2.5%	90.8% -0.8%	89.9% -0.2%	89.0% 0.0%	88.5% 1.4%	84.9% -2.8%	86.8% -1.8%